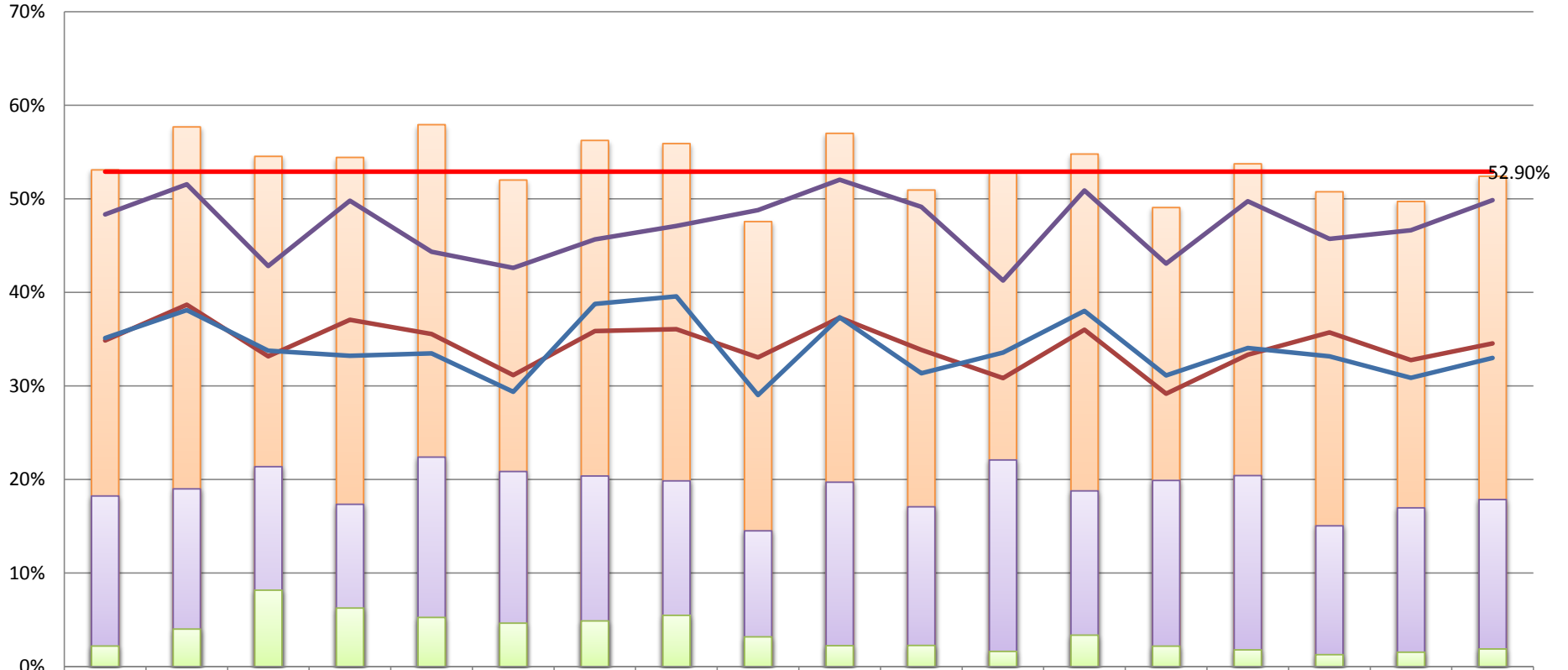


○平成28年7月10日執行 参議院議員通常選挙(選挙区) 投票結果

投票区	当日有権者数 (A)			期日前投票者数 (B)			うちアピタ魚津店 (C)			期日前投票率 (D=B/A)			臨時投票所投票率 (E=C/A)			当日投票者数 (F)			うち不在者投票 (G)			投票者数 (H=B+F)			投票率 (I=H/A)		
	男	女	計	男	女	計	男	女	計	男	女	計	男	女	計	男	女	計	男	女	計	男	女	計	男	女	計
魚津第1	1,212	1,381	2,593	199	274	473	19	38	57	16.42%	19.84%	18.24%	1.57%	2.75%	2.20%	441	463	904	6	10	16	640	737	1,377	52.81%	53.37%	53.10%
魚津第2	1,121	1,321	2,442	198	266	464	33	65	98	17.66%	20.14%	19.00%	2.94%	4.92%	4.01%	466	479	945	8	13	21	664	745	1,409	59.23%	56.40%	57.70%
下中島	1,242	1,242	2,484	226	305	531	70	133	203	18.20%	24.56%	21.38%	5.64%	10.71%	8.17%	445	379	824	12	5	17	671	684	1,355	54.03%	55.07%	54.55%
上中島	608	654	1,262	98	121	219	28	51	79	16.12%	18.50%	17.35%	4.61%	7.80%	6.26%	250	218	468	4	5	9	348	339	687	57.24%	51.83%	54.44%
松倉	453	498	951	95	118	213	20	30	50	20.97%	23.69%	22.40%	4.42%	6.02%	5.26%	172	166	338	2	4	6	267	284	551	58.94%	57.03%	57.94%
上野方	950	1,030	1,980	185	228	413	38	54	92	19.47%	22.14%	20.86%	4.00%	5.24%	4.65%	327	290	617	2	4	6	512	518	1,030	53.89%	50.29%	52.02%
下野方第1	916	1,091	2,007	186	223	409	42	56	98	20.31%	20.44%	20.38%	4.59%	5.13%	4.88%	347	373	720	24	53	77	533	596	1,129	58.19%	54.63%	56.25%
下野方第2	580	679	1,259	98	152	250	23	46	69	16.90%	22.39%	19.86%	3.97%	6.77%	5.48%	224	230	454	6	7	13	322	382	704	55.52%	56.26%	55.92%
下野方第3	1,076	1,156	2,232	155	169	324	29	42	71	14.41%	14.62%	14.52%	2.70%	3.63%	3.18%	367	371	738	2	4	6	522	540	1,062	48.51%	46.71%	47.58%
片貝	454	530	984	84	110	194	7	15	22	18.50%	20.75%	19.72%	1.54%	2.83%	2.24%	189	178	367	2	5	7	273	288	561	60.13%	54.34%	57.01%
加積第1	1,732	1,850	3,582	272	340	612	32	49	81	15.70%	18.38%	17.09%	1.85%	2.65%	2.26%	630	583	1,213	11	4	15	902	923	1,825	52.08%	49.89%	50.95%
加積第2	1,492	1,586	3,078	287	393	680	17	33	50	19.24%	24.78%	22.09%	1.14%	2.08%	1.62%	497	452	949	5	10	15	784	845	1,629	52.55%	53.28%	52.92%
道下第1	572	647	1,219	103	126	229	17	24	41	18.01%	19.47%	18.79%	2.97%	3.71%	3.36%	213	226	439	4	6	10	316	352	668	55.24%	54.40%	54.80%
道下第2	1,579	1,667	3,246	290	356	646	28	43	71	18.37%	21.36%	19.90%	1.77%	2.58%	2.19%	499	448	947	18	11	29	789	804	1,593	49.97%	48.23%	49.08%
経田第1	1,365	1,539	2,904	247	346	593	22	30	52	18.10%	22.48%	20.42%	1.61%	1.95%	1.79%	508	460	968	6	9	15	755	806	1,561	55.31%	52.37%	53.75%
経田第2	607	569	1,176	86	91	177	3	12	15	14.17%	15.99%	15.05%	0.49%	2.11%	1.28%	227	193	420	6	4	10	313	284	597	51.57%	49.91%	50.77%
天神	998	1,017	2,015	159	183	342	14	17	31	15.93%	17.99%	16.97%	1.40%	1.67%	1.54%	358	302	660	2	2	4	517	485	1,002	51.80%	47.69%	49.73%
西布施	562	552	1,114	89	110	199	7	14	21	15.84%	19.93%	17.86%	1.25%	2.54%	1.89%	202	183	385	3	5	8	291	293	584	51.78%	53.08%	52.42%
合計	17,519	19,009	36,528	3,057	3,911	6,968	449	752	1,201	17.45%	20.57%	19.08%	2.56%	3.96%	3.29%	6,362	5,994	12,356	123	161	284	9,419	9,905	19,324	53.76%	52.11%	52.90%

○平成28年7月10日執行 参議院議員通常選挙(選挙区) 投票結果

投票率



	魚津第1	魚津第2	下中島	上中島	松倉	上野方	下野方第1	下野方第2	下野方第3	片貝	加積第1	加積第2	道下第1	道下第2	経田第1	経田第2	天神	西布施
投票率	53.10%	57.70%	54.55%	54.44%	57.94%	52.02%	56.25%	55.92%	47.58%	57.01%	50.95%	52.92%	54.80%	49.08%	53.75%	50.77%	49.73%	52.42%
期日前投票率	18.24%	19.00%	21.38%	17.35%	22.40%	20.86%	20.38%	19.86%	14.52%	19.72%	17.09%	22.09%	18.79%	19.90%	20.42%	15.05%	16.97%	17.86%
臨時投票所投票率	2.20%	4.01%	8.17%	6.26%	5.26%	4.65%	4.88%	5.48%	3.18%	2.24%	2.26%	1.62%	3.36%	2.19%	1.79%	1.28%	1.54%	1.89%
【参考】28参当日投票率	34.86%	38.70%	33.17%	37.08%	35.54%	31.16%	35.87%	36.06%	33.06%	37.30%	33.86%	30.83%	36.01%	29.17%	33.33%	35.71%	32.75%	34.56%
【参考】28市議当日投票率	48.35%	51.56%	42.81%	49.80%	44.34%	42.62%	45.67%	47.12%	48.81%	52.04%	49.16%	41.29%	50.89%	43.09%	49.75%	45.72%	46.65%	49.86%
【参考】25参当日投票率	35.12%	38.12%	33.78%	33.23%	33.48%	29.37%	38.77%	39.56%	29.03%	37.34%	31.34%	33.58%	38.01%	31.13%	34.05%	33.16%	30.87%	33.01%
【参考】全体平均	52.90%																	