

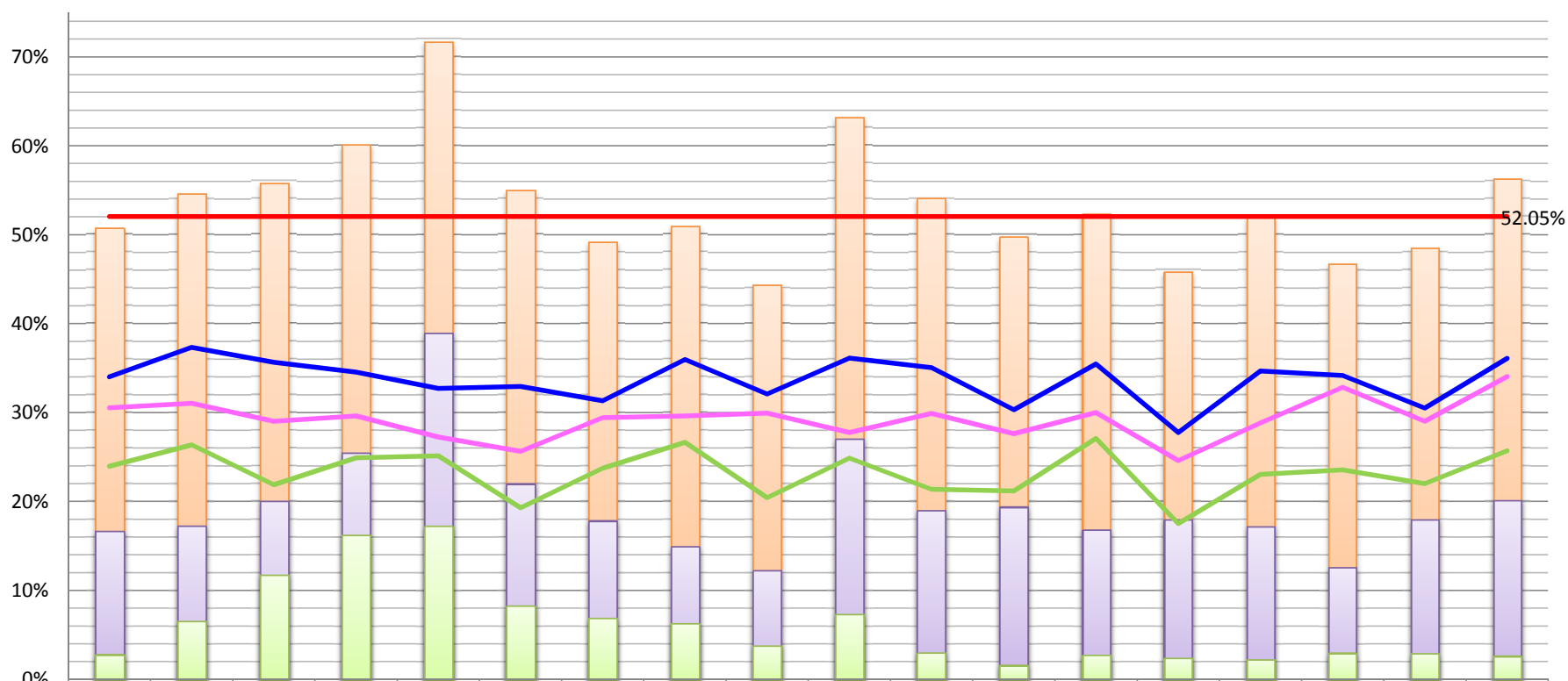
○平成31年4月7日執行 富山県議会議員選挙 投票結果

投票区	当日有権者数 (A)			期日前投票者数 (B)			うち臨時投票所 (C)			期日前投票率 (D=B/A)			臨時投票所投票率 (E=C/A)			当日投票者数 (F)			うち不在者投票 (G)			投票者数 (H=B+F)			投票率 (I=H/A)		
	男	女	計	男	女	計	男	女	計	男	女	計	男	女	計	男	女	計	男	女	計	男	女	計	男	女	計
魚津第1	1,138	1,318	2,456	149	260	409	17	52	69	13.09%	19.73%	16.65%	1.49%	3.95%	2.81%	402	433	835	4	6	10	551	693	1,244	48.42%	52.58%	50.65%
魚津第2	1,042	1,212	2,254	165	224	389	59	89	148	15.83%	18.48%	17.26%	5.66%	7.34%	6.57%	399	442	841	6	10	16	564	666	1,230	54.13%	54.95%	54.57%
下中島	1,211	1,218	2,429	210	277	487	113	173	286	17.34%	22.74%	20.05%	9.33%	14.20%	11.77%	440	426	866	7	2	9	650	703	1,353	53.67%	57.72%	55.70%
上中島	597	627	1,224	138	174	312	78	121	199	23.12%	27.75%	25.49%	13.07%	19.30%	16.26%	224	199	423	3	7	10	362	373	735	60.64%	59.49%	60.05%
松倉	432	479	911	154	201	355	59	98	157	35.65%	41.96%	38.97%	13.66%	20.46%	17.23%	162	136	298	2	3	5	316	337	653	73.15%	70.35%	71.68%
上野方	941	1,021	1,962	190	241	431	64	98	162	20.19%	23.60%	21.97%	6.80%	9.60%	8.26%	325	321	646	5	5	10	515	562	1,077	54.73%	55.04%	54.89%
下野方第1	913	1,061	1,974	155	197	352	51	85	136	16.98%	18.57%	17.83%	5.59%	8.01%	6.89%	295	323	618	21	34	55	450	520	970	49.29%	49.01%	49.14%
下野方第2	562	639	1,201	74	105	179	25	51	76	13.17%	16.43%	14.90%	4.45%	7.98%	6.33%	208	224	432	1	1	2	282	329	611	50.18%	51.49%	50.87%
下野方第3	1,126	1,160	2,286	138	142	280	31	56	87	12.26%	12.24%	12.25%	2.75%	4.83%	3.81%	358	375	733	1	3	4	496	517	1,013	44.05%	44.57%	44.31%
片貝	424	501	925	107	143	250	25	43	68	25.24%	28.54%	27.03%	5.90%	8.58%	7.35%	168	166	334	4	4	8	275	309	584	64.86%	61.68%	63.14%
加積第1	1,720	1,847	3,567	302	376	678	40	68	108	17.56%	20.36%	19.01%	2.33%	3.68%	3.03%	623	627	1,250	6	1	7	925	1,003	1,928	53.78%	54.30%	54.05%
加積第2	1,477	1,582	3,059	252	341	593	15	34	49	17.06%	21.55%	19.39%	1.02%	2.15%	1.60%	466	461	927	5	4	9	718	802	1,520	48.61%	50.70%	49.69%
道下第1	601	640	1,241	97	112	209	16	18	34	16.14%	17.50%	16.84%	2.66%	2.81%	2.74%	210	230	440	3	4	7	307	342	649	51.08%	53.44%	52.30%
道下第2	1,583	1,641	3,224	244	335	579	29	48	77	15.41%	20.41%	17.96%	1.83%	2.93%	2.39%	471	424	895	12	10	22	715	759	1,474	45.17%	46.25%	45.72%
経田第1	1,313	1,490	2,803	199	283	482	19	45	64	15.16%	18.99%	17.20%	1.45%	3.02%	2.28%	474	498	972	4	3	7	673	781	1,454	51.26%	52.42%	51.87%
経田第2	627	582	1,209	71	81	152	13	23	36	11.32%	13.92%	12.57%	2.07%	3.95%	2.98%	216	197	413	3	2	5	287	278	565	45.77%	47.77%	46.73%
天神	956	998	1,954	164	187	351	16	41	57	17.15%	18.74%	17.96%	1.67%	4.11%	2.92%	306	290	596	0	3	3	470	477	947	49.16%	47.80%	48.46%
西布施	541	523	1,064	98	116	214	12	16	28	18.11%	22.18%	20.11%	2.22%	3.06%	2.63%	202	182	384	7	2	9	300	298	598	55.45%	56.98%	56.20%
合計	17,204	18,539	35,743	2,907	3,795	6,702	682	1,159	1,841	16.90%	20.47%	18.75%	3.96%	6.25%	5.15%	5,949	5,954	11,903	94	104	198	8,856	9,749	18,605	51.48%	52.59%	52.05%

※臨時期日前投票所の設置状況:4月5日(金)・6日(土)にアピタ魚津店2階イベントスペースに設置

○平成31年4月7日執行 富山県議会議員選挙 投票結果【直近選挙との比較】

投票率



投票率	50.65%	54.57%	55.70%	60.05%	71.68%	54.89%	49.14%	50.87%	44.31%	63.14%	54.05%	49.69%	52.30%	45.72%	51.87%	46.73%	48.46%	56.20%	
期日前投票率	16.65%	17.26%	20.05%	25.49%	38.97%	21.97%	17.83%	14.90%	12.25%	27.03%	19.01%	19.39%	16.84%	17.96%	17.20%	12.57%	17.96%	20.11%	
臨時投票所投票率	2.81%	6.57%	11.77%	16.26%	17.23%	8.26%	6.89%	6.33%	3.81%	7.35%	3.03%	1.60%	2.74%	2.39%	2.28%	2.98%	2.92%	2.63%	
【参考】今回当日投票率	34.00%	37.31%	35.65%	34.56%	32.71%	32.93%	31.31%	35.97%	32.06%	36.11%	35.04%	30.30%	35.46%	27.76%	34.68%	34.16%	30.50%	36.09%	
【参考】29衆当日投票率	30.55%	31.03%	29.01%	29.62%	27.24%	25.62%	29.43%	29.61%	29.95%	27.77%	29.89%	27.63%	30.00%	24.58%	28.81%	32.82%	29.01%	34.04%	
【参考】28県知事当日投票率	23.96%	26.36%	21.89%	24.92%	25.13%	19.29%	23.74%	26.65%	20.41%	24.87%	21.37%	21.17%	27.09%	17.52%	23.04%	23.55%	21.99%	25.70%	
【参考】今回平均	52.05%																		

※「当日投票率」…不在者投票を含む選挙当日の投票率です。期日前投票は含みません。